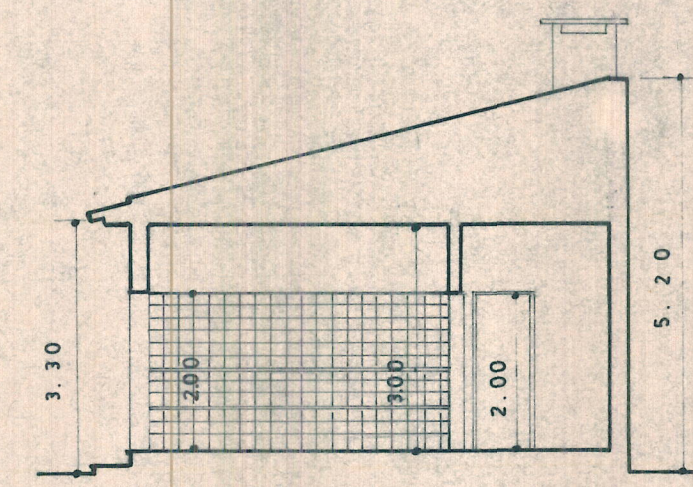
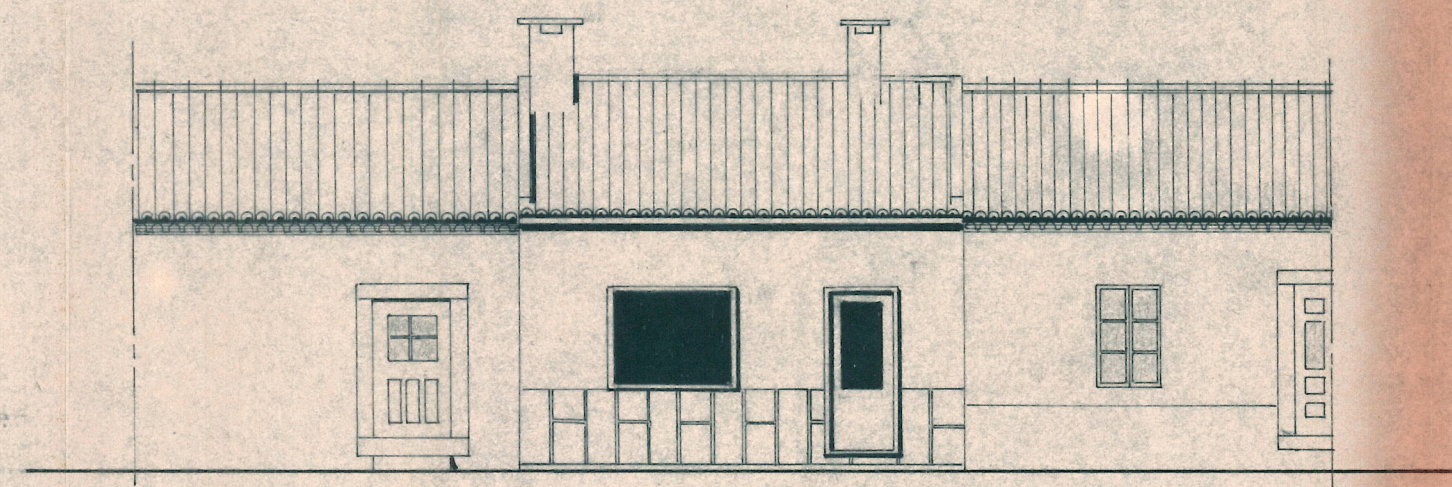


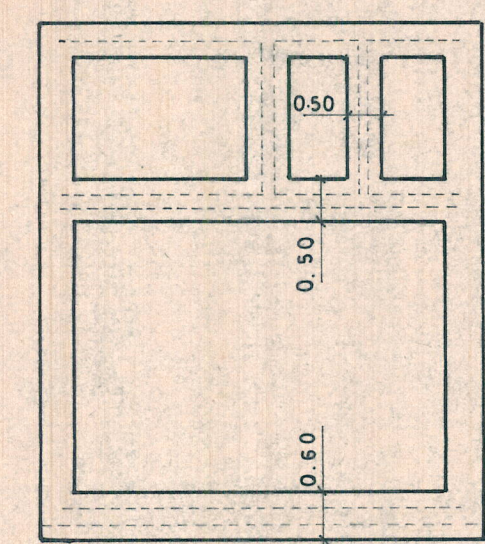
ALÇ. PRÍNC. EXIST.



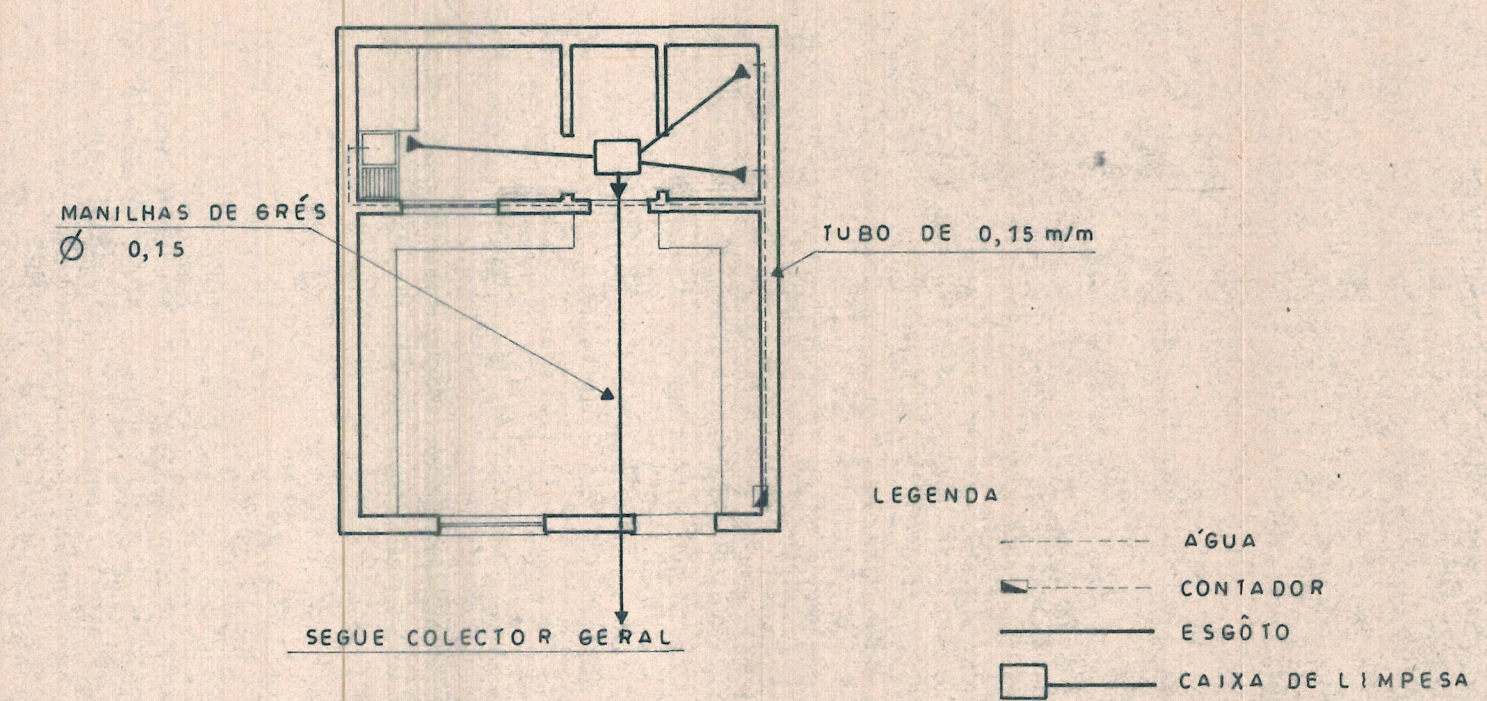
CORTE POR A-B



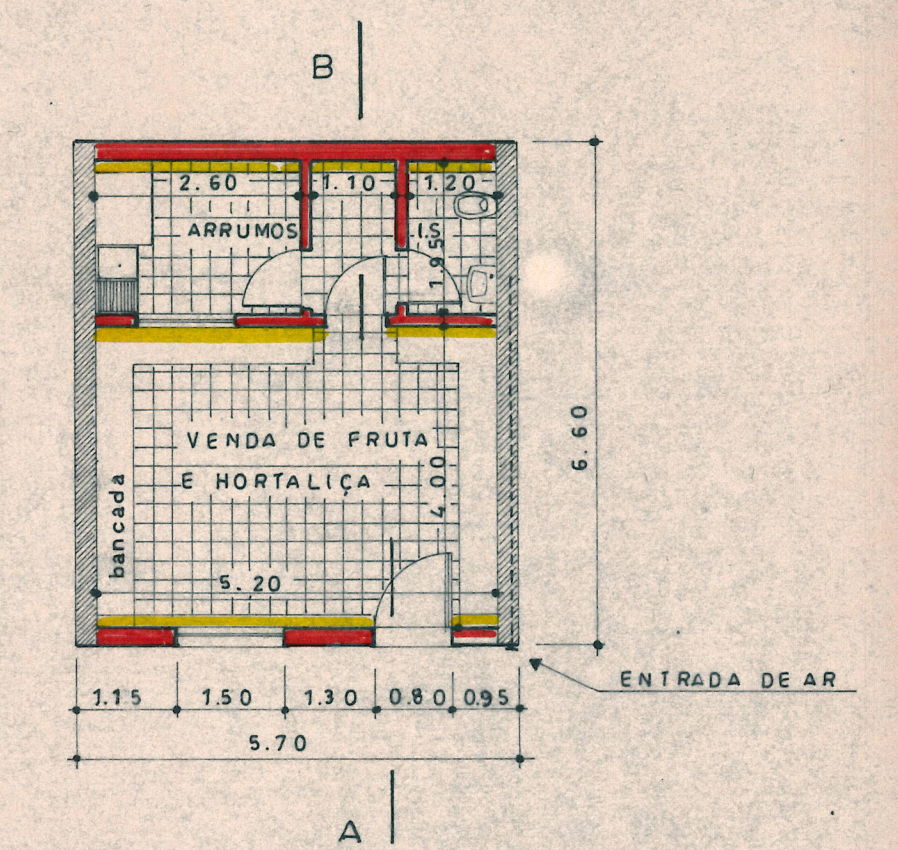
ALÇ. PRÍNC. MODIF.



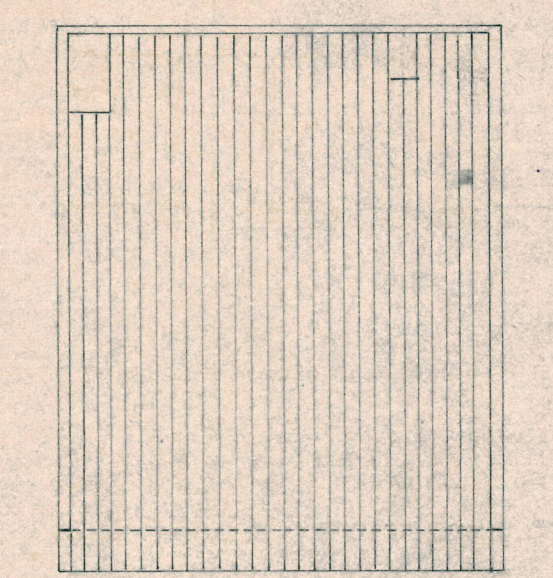
PLANTA DAS FUNDACÕES



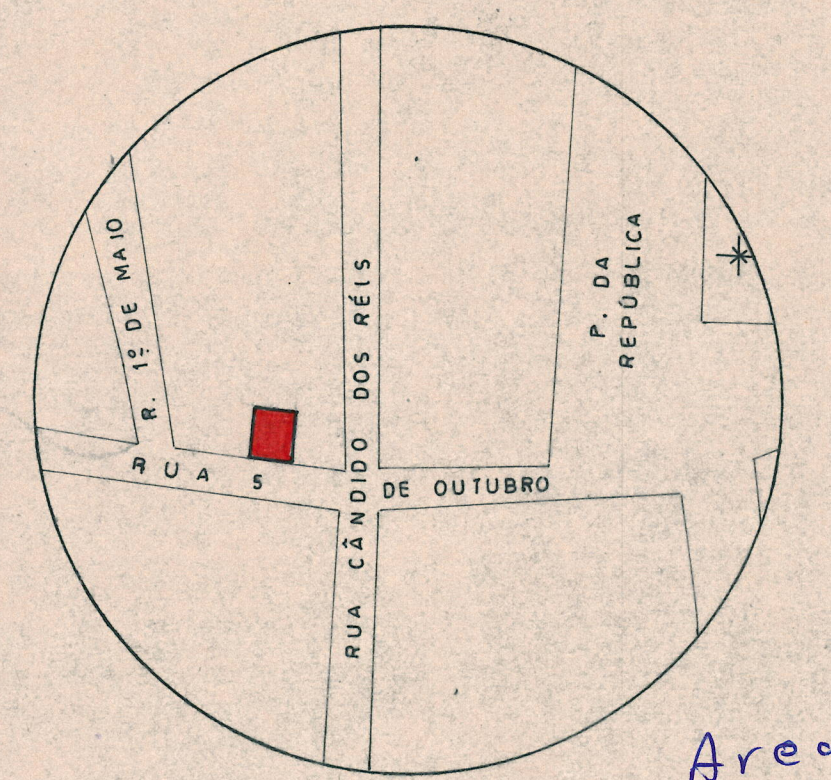
PLANTA DE ÁGUA E ESGOTOS



PLANTA



PLANTA DA COBERTURA



LOCALIZAÇÃO

Area total = 37,20 m<sup>2</sup>

|                             |                                   |           |     |
|-----------------------------|-----------------------------------|-----------|-----|
| REQUERENTE                  | LOCAL                             |           |     |
| ANTÓNIO MARTINS DE OLIVEIRA | Rua 5 de Outubro 6 SAMORA CORREIA |           |     |
| MODIFICAÇÃO P/ ESTABELEC.   | PLANTAS ALÇADOS E CORTE           |           |     |
| O TÉCNICO                   | ESCALA                            | DATA      | N.º |
| <i>[Signature]</i>          | 1/100 e 1/1000                    | 15-1-1976 | 1   |

